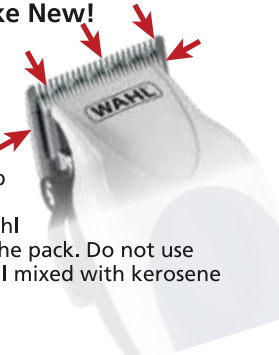


## Keep it Running Like New!

The blades of your new clipper should be oiled every few haircuts.

For best results, place three drops on front of the blades and one drop on each side of blade as shown. Use only the Wahl Clipper Oil included in the pack. Do not use hair oil, grease or any oil mixed with kerosene or any solvent.



## Too Noisy?

(A) Oil blades as noted on this sheet.  
 (B) You can reduce the "clatter sound" by adjusting the power screw. The power screw was adjusted for peak efficiency before leaving the factory. However, if voltage in your home is too high or low; the clipper power screw may need adjustment.



### Adjust Power Screw to Reduce Clipper Noise (excessive clattering)

1. Turn your clipper "ON"
2. Use the end of the cleaning brush or a screwdriver to turn power screw in a COUNTER CLOCKWISE direction until clatter goes away.

## Max Power!

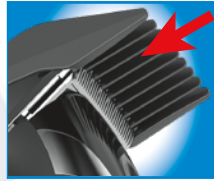
### Adjusting Power Screw for Maximum Power Setting

1. Turn your clipper "ON"
2. Use the end of the cleaning brush or a screwdriver to turn power screw in a CLOCKWISE direction until you hear a clattering noise.
3. Then turn power screw in opposite direction (COUNTER CLOCKWISE) until clattering stops.

## Goof- Proof!

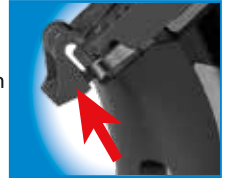
### Adding Attachment Guards

Align guard onto blade then press down where guard number is located until you hear a snap.



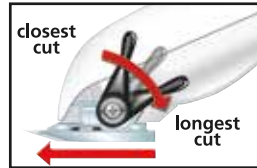
### Removing Attachment Guards

From underneath, lift tab up to release from blade.



## Blend it!

Use for blending between different hair lengths. The taper lever adds versatility to your clipper by allowing you to gradually change the closeness of your cut. (Up position = closest cut; Down position = longest cut)



## Helpful Hints

Use brush included to clean out excess hair on clipper and between blades (don't clean with running water)

**SAFETY FIRST!** Please read instruction book first before using clipper

If defective contact Wahl via 1-800-767-9245

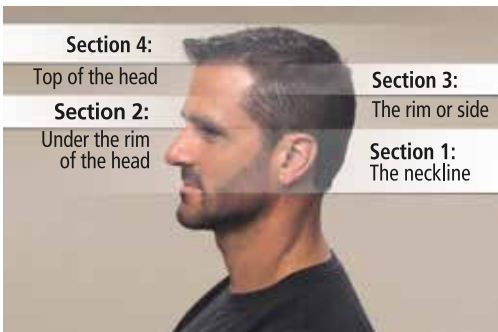
## You can do it!

### Haircutting Tips & Techniques

When you cut your hair, you should visualize the head as if it were divided into four sections. Image to the left shows the different sections. Using proper techniques when moving from one section to the next will help you blend the sections together for professional looking results. See instruction book for more tips.

### For best results...

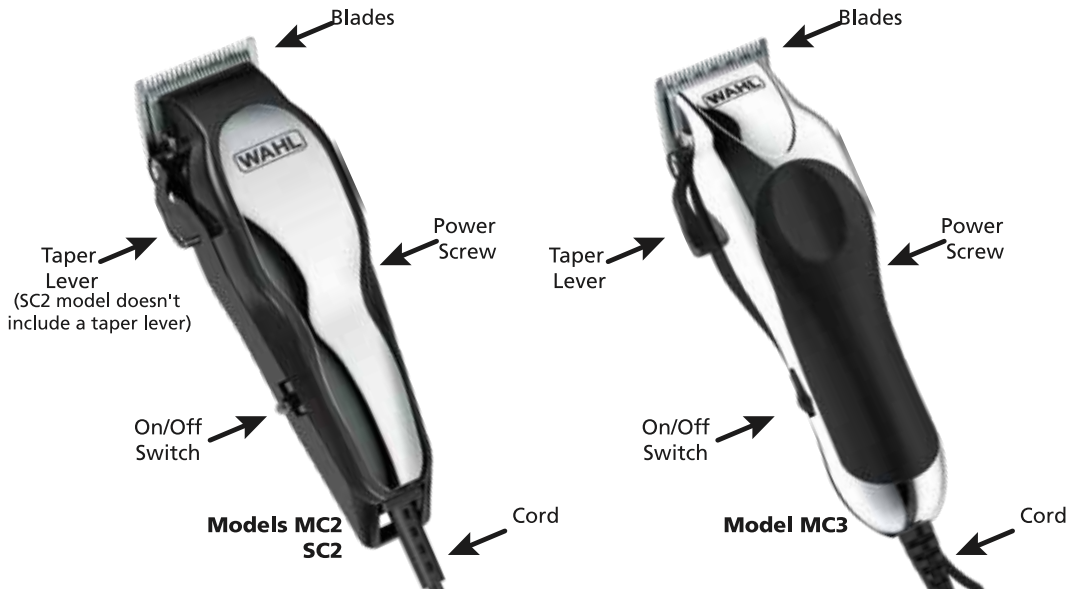
- The first time you cut your hair, cut only a small section using the largest attachment guard size until you become better accustomed to the clipper and guard sizes.
- Hair should be dry before using clipper
- Don't force the clipper through the hair, go through at a slow, even speed.
- Go through the hair against the direction of your hair's growth.



# YOUR NEW CLIPPER!

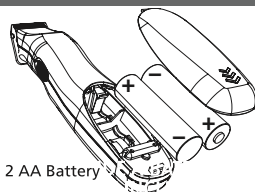
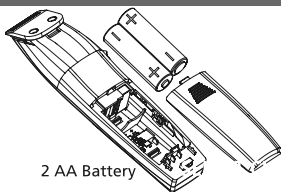
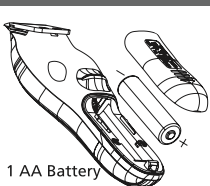


Quality products made in the USA  
Of domestic and imported parts



## DETAIL TRIMMERS

SELECT CLIPPER KITS INCLUDE A BATTERY TRIMMER,  
YOUR KIT MAY OR MAY NOT INCLUDE A TRIMMER



\*Please reference instruction books for full details

## Thank You!

Thank you for purchasing this Wahl haircutting kit.

We appreciate your support and we hope you enjoy your new clipper!

If you have any questions, please contact one of our USA based customer service representatives located next to our factory in Sterling, IL USA.



[techsupport@wahlclipper.com](mailto:techsupport@wahlclipper.com)



1.800.767.9245  
(M-F 7:30am - 4:30pm CST)



[wahlUSA.com](http://wahlUSA.com)



Find us on social media:  
[@WAHLGROOMING](https://www.instagram.com/wahlgrooming)



Easy step-by-step instructions included. For more haircutting tips and techniques visit [wahlUSA.com](http://wahlUSA.com).

Quick Start Guide