

Keep it Running Like New!

The blades of your new clipper and trimmer should be oiled every few haircuts. For best results, place three drops on front of the blades and one drop on each side of blade as shown.

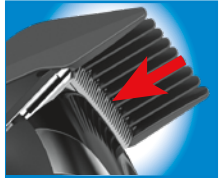


Use only the Wahl Clipper Oil included in the pack. Do not use hair oil, grease or any oil mixed with kerosene or any solvent.

Goof- Proof!

Adding Attachment Guards

Align guard onto blade then press down on guard where guard number is located until you hear a snap.



Removing Attachment Guards

From underneath, lift tab up to release from blade.



Too Noisy?

(A) Oil blades as noted on this sheet.

(B) The power screw was adjusted for peak efficiency before leaving the factory. However, if voltage in your home is too high or low; the clipper power screw may need adjustment.

Adjust Power Screw to Reduce Clipper Noise (excessive clattering):

1. Peel back soft grip sleeve on right side of clipper to expose power screw.

2. Turn your clipper "ON"

3. Use the end of the detail brush or a screwdriver to turn power screw in a COUNTER CLOCKWISE direction until clatter goes away.



Max Power!

Adjusting Power Screw for Max Power Setting

1. Turn your clipper "ON"

2. Use the end of the cleaning brush or a screwdriver to turn power screw in a CLOCKWISE direction until you hear a clattering noise.

3. Then turn power screw in opposite direction (COUNTER CLOCKWISE) until clattering stops.

Your New Clipper



Haircutting Tips & Techniques



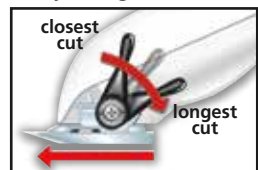
Haircutting Tips & Techniques

When you cut your hair, you should visualize the head as if it were divided into four sections. Image above shows the different sections. Using proper techniques when moving from one section to the next will help you blend the sections together for professional looking results. See instruction book for more tips.

Blend it!

Use for blending between different hair lengths. The fade lever adds versatility to your clipper by allowing you to gradually change the closeness of your cut.

Up = closest
Down = longest



Helpful Hints

Use brush included to clean out excess hair on clipper and between blades (don't clean with running water)

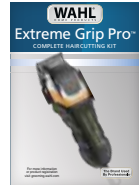
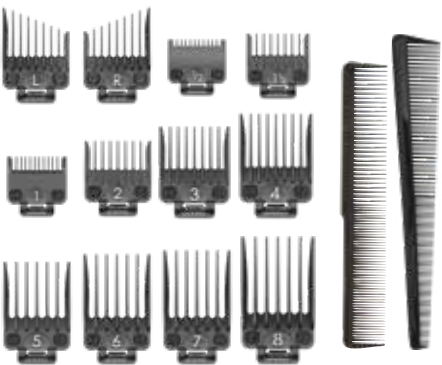
SAFETY FIRST! Please read instruction book first before using clipper



NEW SMOOTH CUT GUARDS

Guards for superior comfort & cut quality.

SECURE SNAP™ attachment for goof-proof cuts.



EXTREME GRIP PRO
COMPLETE HAIRCUTTING KIT

Thank You!

Thank you for purchasing this Wahl haircutting kit. We appreciate your support and we hope you enjoy your new clipper!

If you have any questions, please contact one of our USA based customer service representatives located next to our factory in Sterling, IL USA.



help@wahlclipper.com



1.800.767.9245
(M-F 7:30am - 4:30pm CST)



wahlUSA.com



Find us on social media:
@WAHLGROOMING

Quick Start Guide